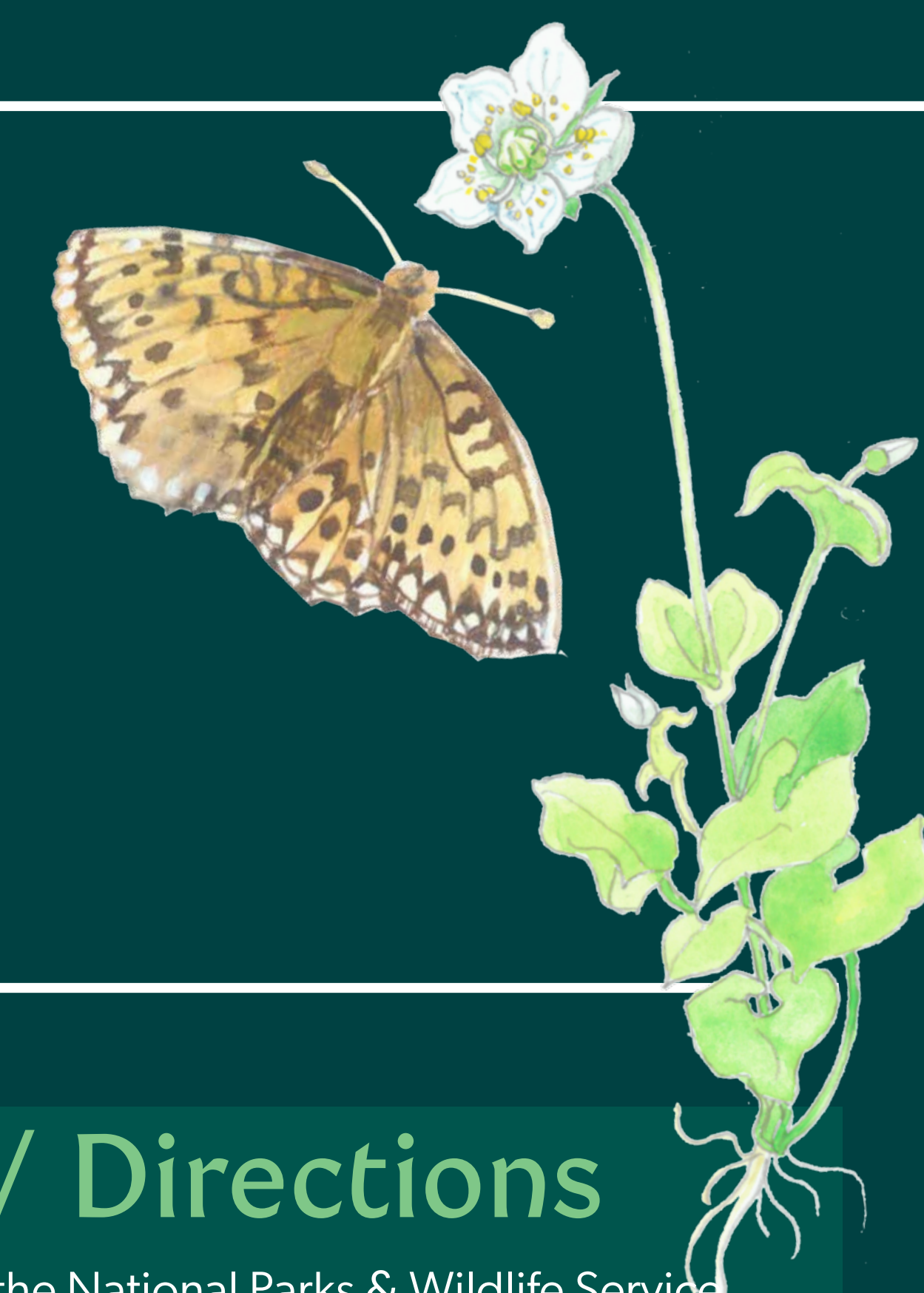
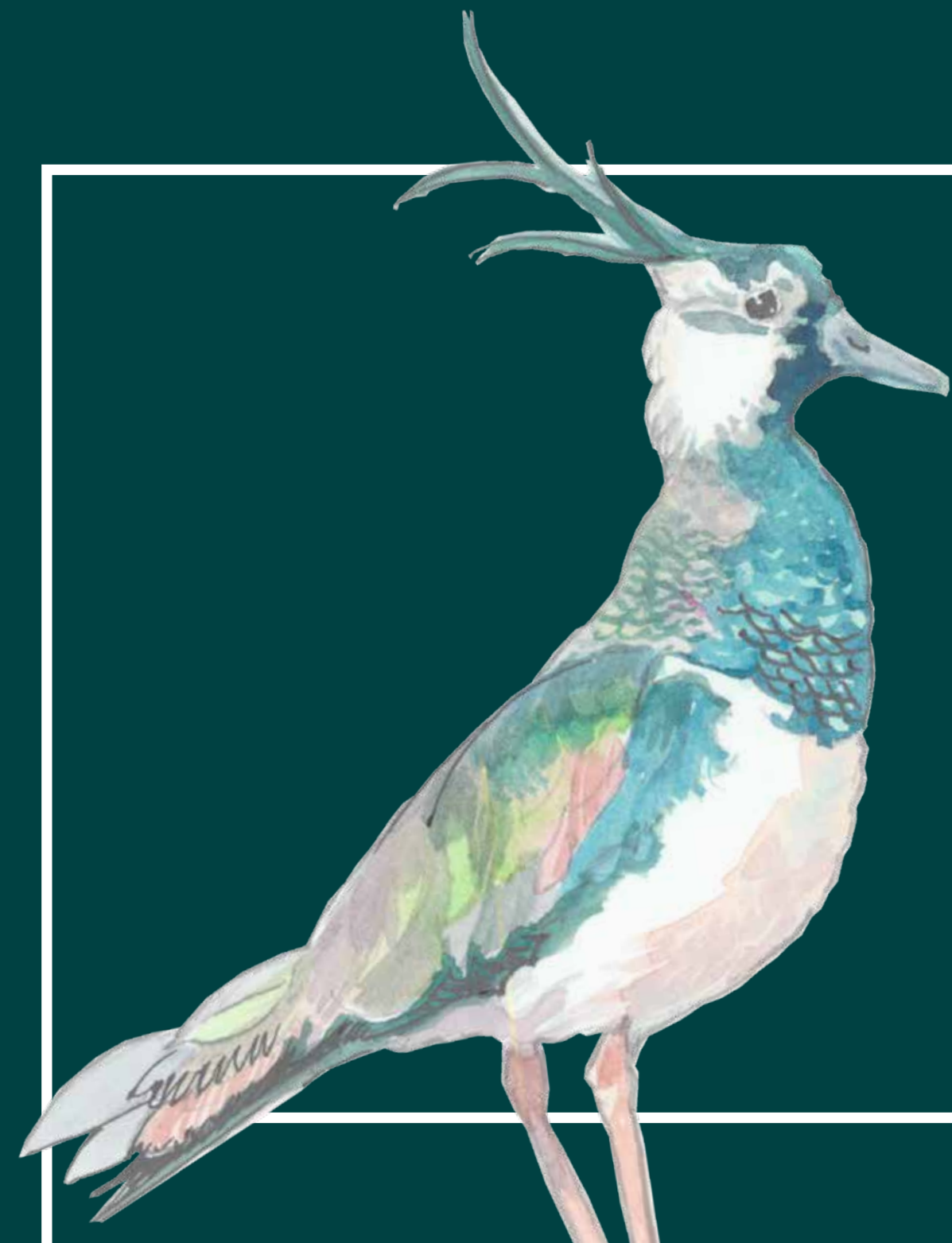




Cosain an Dúlra
Protect Nature

Lurgabrack Nature Walk

Come Explore our Natural Landscape and Wildlife



Trail Information

Trail Start / Trail Finish: Haggard Car Park, Horn Head, Dunfanaghy, Co. Donegal

Grid Ref: C 008 375

Time: 1.5 to 2 Hours

Length: 5.2 km

Total Climb: 152 m

Type: Nature Walk

Format: Looped Walk

Degree of Difficulty: Moderate -

Suitable for people with a moderate level of fitness and some walking experience

Terrain: Sandy Path, Forest and Open Grazing

Minimum Gear: Walking Shoes, Rain Gear, Water, Snack and Mobile Phone

Waymarking: Dark Green on Black

Maps: OSI Discovery Series Sheet No. 2

Services: Full Services in Dunfanaghy (1km)

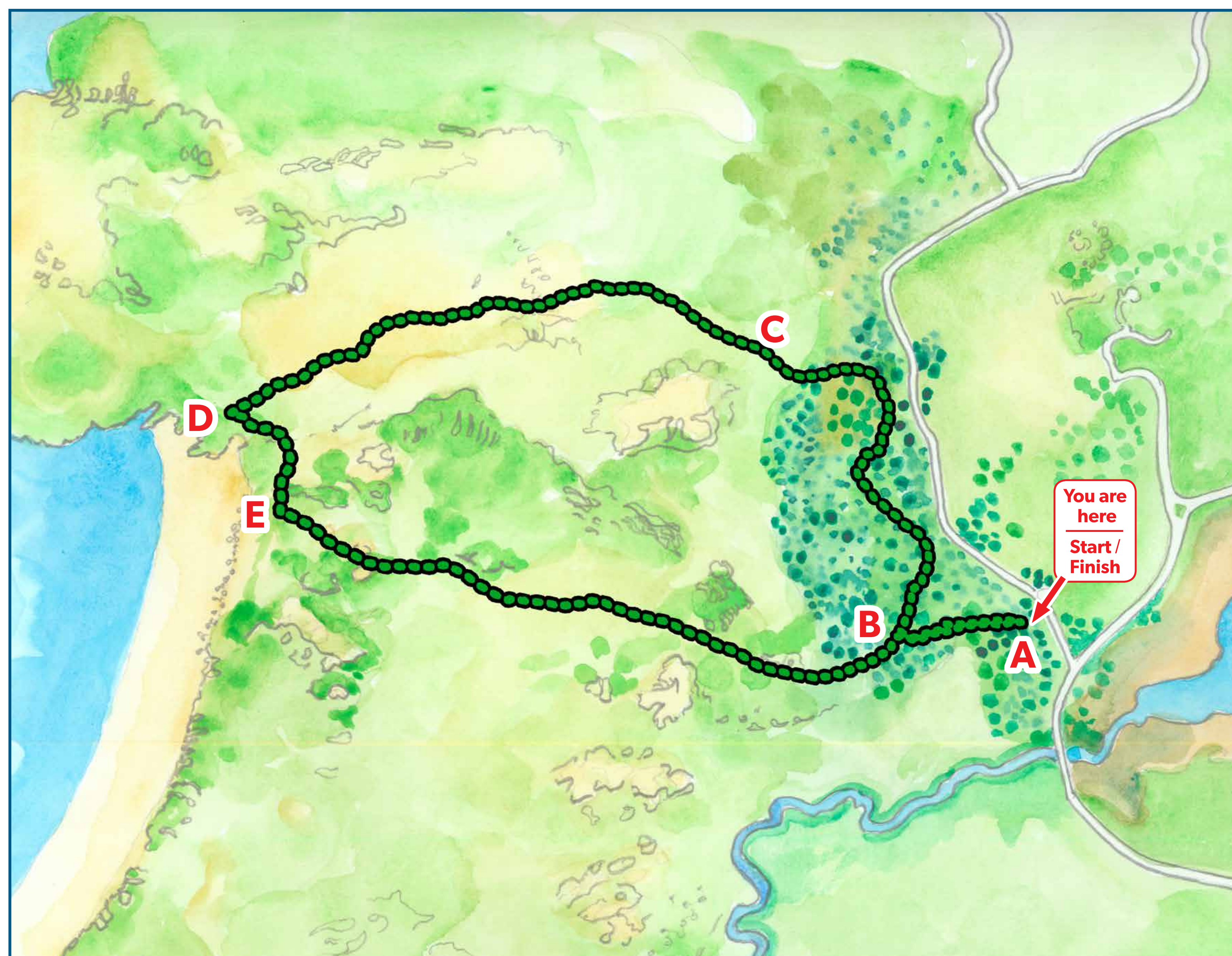
See Also: www.irishtrails.ie

www.discoverireland.ie/walking
www.govisitdonegal.com/walking
www.coillteoutdoors.ie

For comments or suggestions on the Lurgabrack Nature Walk please contact National Parks & Wildlife Service: david.mcnamara@npws.gov.ie

Alternatively contact Inga Bock, Rural Recreation Officer on 087 9318077 or ibock@dldc.org

In the event of accidents and/or emergencies please call 999 or 112 and ask for Mountain Rescue, Police or Gardai or, in the case of a fire, the Fire Service



Route Description / Directions

This 5.2km undulating looped walk takes you through the National Parks & Wildlife Service (NPWS) lands of the Horn Head and Rinclevan Special Area of Conservation (SAC) at Lurgabrack through woodland, scrub, dune grassland, dune slack and fixed dunes, to reach Tramore Beach, and leads you back through the lower dunes with great views of the New Lake, Muckish & Errigal mountains and the surrounding countryside.

A-B From the car park, enter through the black kissing gate, and follow the sandy path for ca. 350m through the forest to reach another gate. You will come back to this point on your return.

B-C Take a sharp right up hill through the woodland keeping the stream on your left. After ca. 800m cross the stream and follow the green on black waymarkers northwest towards another Kissing Gate keeping in the livestock. Please note that the fence is electrified.

C-D Go through the gate, follow the sandy path and waymarkers around the higher dunes on your left for ca. 1.5km. You will get spectacular views of Tory Island in the distance, drop down into the dune hollow and climb up the other side to reveal magnificent views of Tramore beach and the islands of Inishbofin, Inishdooye and Inishbeg ahead, to reach a Kissing Gate.

D-E Leave the grazing land through the gate and turn left immediately. Please take care, as there is a severe drop on your right! Follow the markers for ca. 330m along the edge of the dunes. Keep the fence line on your left, until you reach the next Kissing Gate. The superb sandy beach of Tramore can be reached from here by following the sandy track to your right.

E-B To continue on the looped walk, take a left through the gate, and continue for ca. 1.6km through the undulating dune landscape with views of the New Lake, Dunfanaghy and Portnablagh in the distance. Cross the small stream and leave the grazing land through the gate ahead of you, entering back into the woodland.

B-A You are now back where you turned sharp right on the outward journey, and the sandy path straight ahead will take you back to the car park.

Elevation



Important Conservation Notice

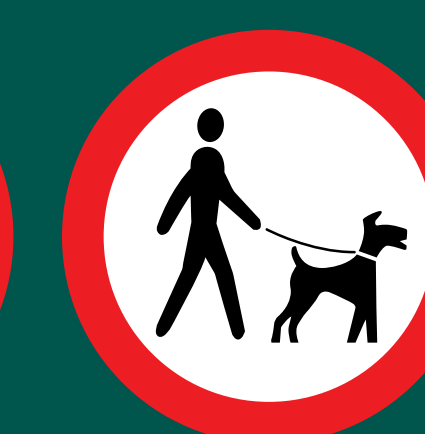
The site is grazed by cattle and horses from 1st September to 30th April each year.

This state-owned property is managed by the National Parks and Wildlife Service and forms an important part of the Horn Head and Rinclevan Special Area of Conservation and Natura 2000 site. More information can be found at: <https://www.npws.ie/protected-sites/sac/000147>

The purpose of seasonal grazing is to conserve the endangered coastal habitats and species on this site.



No Dogs
1st Sept to
30th Apr



Leads only
1st May to
31st Aug



Lurgabrack Nature Walk Information

Lurgabrack, or Lorga Breac (the long low speckled ridge) is managed for nature conservation. Its fixed dune habitat is one of the best examples in Co. Donegal. The area contains some rare mosses, the protected tiny marsh snail *Vertigo geyeri*, and supports breeding Chough and Peregrine Falcon. Butterfly species include Dark Green Fritillary, Small Blue and Small Heath among others.

Grazing horses and cattle play an important part in maintaining the floral diversity of the dunes. Please help keep Lurgabrack in good condition by avoiding walking in the fragile sand dunes closest to the beach. For more info, please see the Nature board.

Leave No Trace

When you are visiting the outdoors remember to practice Leave No Trace. Lurgabrack Nature Walk supports the principles of Leave No Trace Ireland

- 1) Plan Ahead and Prepare
 - 2) Be Considerate of Others
 - 3) Respect Farm Animals and Wildlife
 - 4) Travel on Durable Ground
 - 5) Leave What You Find
 - 6) Dispose of Waste Properly
- Visit leavenotraceireland.org for more info

