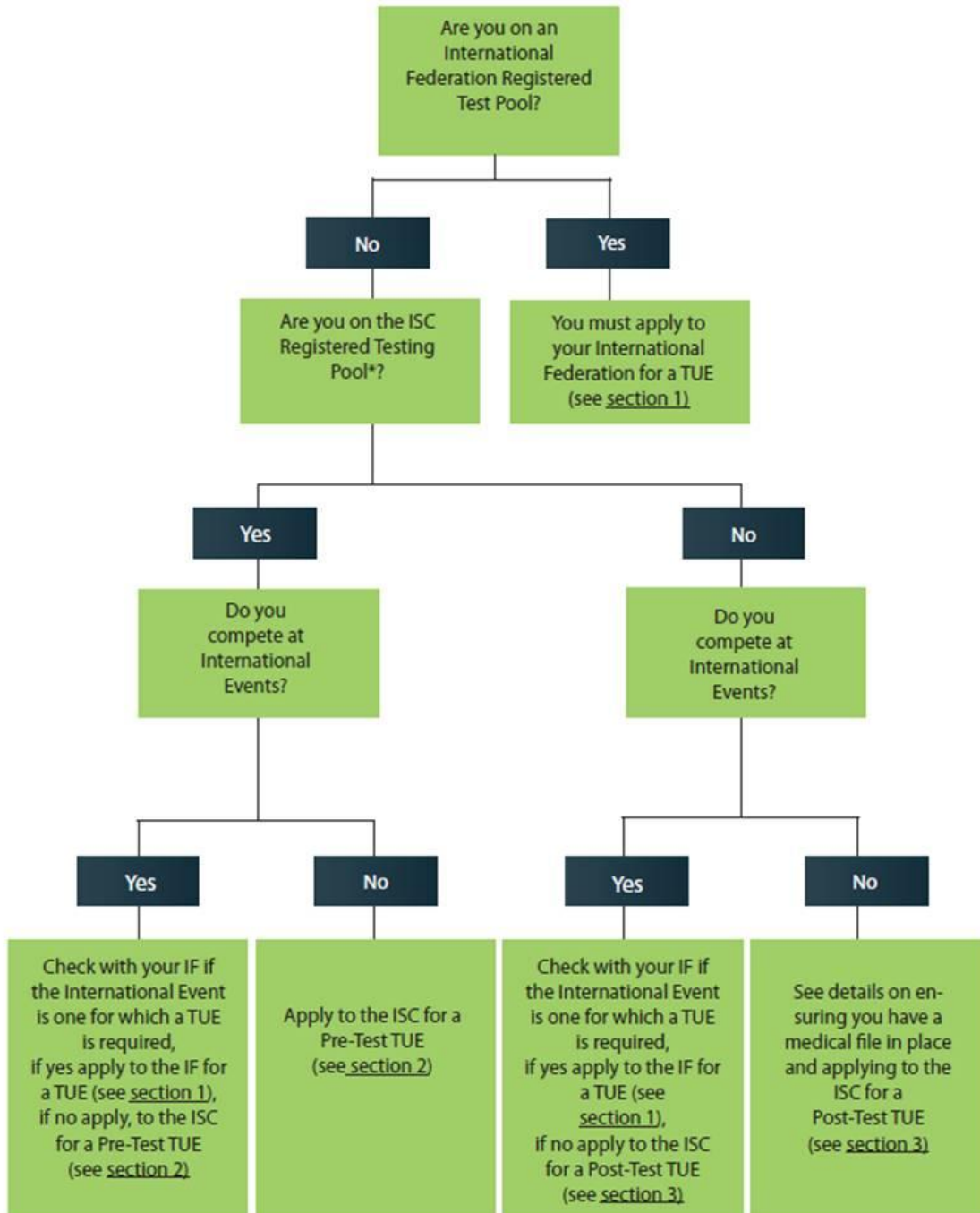




## **Therapeutic Use Exemption (TUE) Policy**

Following an amendment to the Irish Anti-Doping Rules by Sport Ireland on 6th April 2010, Sport Ireland has established a Therapeutic Use Exemption (TUE) Policy based on the level that an athlete competes at; the level an athlete competes at determines whether the athlete needs to apply to Sport Ireland or their International Federation for a TUE, and if applying to Sport Ireland whether the athlete must apply for a TUE before using a prohibited substance (a Pre-Test TUE) or has the option of applying for a TUE retroactively following a positive drug test (a Post-Test TUE). Use the TUE Flowchart to ascertain if you the athlete need to apply to your International Federation or Sport Ireland, and also if you must apply for a Pre-Test TUE or a Post-Test TUE.



\*The Registered Testing Pool is a pool of top level athletes who are subject to both in- and out-of-competition testing, who must meet whereabouts requirements of Sport Ireland. The RTP is agreed with the sport annually, and individual athletes are informed in writing of their inclusion in the RTP.

## **Section 1: Applying to your International Federation (IF) for a TUE**

Under the WADA Code Article 4.4 "Athletes who have been identified as included in their International Federation's Registered Testing Pool may only obtain therapeutic use exemptions in accordance with the rules of their International Federation. Each International Federation shall publish a list of those International Events for which a therapeutic use exemption from the International Federation is required."

If the flowchart suggests that you should apply to the IF for a TUE, contact the Anti-Doping Officer of your sport or contact the International Federation directly to find out if the International Events you compete in are on the list requiring you to apply to the International Federation for a TUE. If an athlete already has an existing TUE approved by their NADO submit this to your IF for approval. Code article 4.4 requires the ADOs to recognize TUEs granted by other ADOs that satisfy the article 4.1 conditions.

## **Section 2: Pre-Test TUE**

If the flowchart suggests that you should apply for a Pre-Test TUE BEFORE you take the medication - follow the section below titled 'How to apply for a TUE'. You should not take the prohibited medication until you have received a Certificate of Approval.

In the case of a medical emergency where medical personnel need to administer medications immediately, contact Sport Ireland/ International Federation as soon as possible afterwards to seek advice on making a TUE Application for this emergency treatment.

## **Section 3: Post-Test TUE**

If the flowchart suggests that you can apply for a Post-Test TUE, this means that following a drug test, if the lab reports an Adverse Analytical Finding (AAF), i.e. a prohibited substance is found in your sample, Sport Ireland will contact you to offer you the opportunity you to make a TUE application for the substance within specified timelines. All athletes are urged to ensure that their doctor keeps their medical file\*\* up to date at all times, therefore you will be in a position to make this application if required.

If you are unable to prove through your TUE application that you were using the Prohibited Substance or Prohibited Method for a legitimate therapeutic purpose, the AAF will stand and the National Governing Body will start proceedings for a Disciplinary Hearing as per the Irish Anti-Doping Rules. If the TUE Committee reviews the medical file and is satisfied that you used the Prohibited Substance or Method for a legitimate purpose, the AAF is not pursued and no action is taken against you.

## **How to apply for a TUE**

- Allow at least 30 days prior to your next competition in order to allow sufficient time for the TUE Committee to make a decision on the application.
- You should not take the prohibited medication until you have received a Certificate of Approval except in a medical emergency where you should contact Sport Ireland/ International Federation immediately.
- Download a TUE form from [www.irishsportsCouncil.ie/tue](http://www.irishsportsCouncil.ie/tue) or request a form from the TUE Secretariat - phone: 00353-1-8608818, email: [tue@irishsportsCouncil.ie](mailto:tue@irishsportsCouncil.ie)
- If a permitted medication can be used to treat the medical condition, the prescribing doctor must provide clinical justification on the TUE form for the requested use of the prohibited medication.
- The PRESCRIBING doctor must complete and sign the TUE Form which should be accompanied by a medical file\*\*
- All TUE applications MUST be accompanied by a medical file\* reflecting current best medical practice to include:

## **A complete medical history**

- Copies of all relevant examinations and clinical notes (for example, if you reference a clinic visit in a letter or summary, you must include a copy of the clinical notes taken during the visit)
- Copies of laboratory results/reports, and imaging studies
- Exact name, speciality, address (including telephone, e-mail, fax) of examining physician.

## **For asthma TUE applications, the medical file should also specifically include:**

- A comprehensive report of the clinical examination with specific focus on the respiratory system
- A report of spirometry with the measure of the Forced Expiratory Volume in 1 second (FEV1)
- If airway obstruction is present, the spirometry will be repeated after inhalation of a short acting beta-2 agonist to demonstrate the reversibility of bronchoconstriction
- In the absence of reversible airway obstruction, a bronchial provocation test is required to establish the presence of airway hyper responsiveness.

Submit the TUE Application Form and Medical File by post, fax or email (scanned copy). The TUE Application will be considered by the TUE Committee which consists of several medical professionals. The Committee will make a decision to grant or reject the TUE Application based on TUE Guidelines published by the World Anti-Doping Agency.

You will be informed of the outcome in writing where Sport Ireland will issue either a Certificate of Approval or Notice of Rejection. The outcome will also be forwarded to your National Governing Body, and where applicable your International Federation and/or WADA. The Certificate of Approval will have an expiry date and it is the responsibility of the athlete to reapply for a TUE where necessary. Please Note: The Certificate of Approval is only valid for the substance(s) listed in your Certificate and should your treatment, dosage or situation change, you must contact the TUE Secretariat of Sport Ireland immediately as you may need to reapply for a new TUE for the change of treatment or change of dosage.